

Star Software Update Instruction

Star auto scanner software update normally is via Internet. This is very convenient for customers to obtain the latest diagnostic programs and keep pace with the development of new features and functions. The following instructions will illustrate how to update the **Star** scanner. It is as easy as 1, 2, 3...

1. Precautions

- 1). Insert the CF card in Star main unit correctly;
- 2). Ensure the proper cable connection and stable power supply. Avoid the CF card from being damaged or slow update speed due to power breakdown or the harness connection;
- 3). Do not touch the PC and main unit during the software update;
- 4). Check the CF card after the software update. Repeat the diagnostic program download and update or contact your local dealer for assistance if the screen does not display properly;
- 5). **Backup CF card to PC computer for security.**

2. Hardware Required

- 1). Desktop or Laptop PC with operating systems of Windows 98/2000/XP;
- 2). **Star** main unit and CF card;
- 3). USB Cable and 12V AC/DC adaptor;
- 4). Internet access to website: <http://www.autoboss.net> .

3. Update Steps

Diagnostic program update



Fig 1

- 1). Input the username and password given to login www.autoboss.net and download the relevant diagnostic software program to the desktop of your computer. For example, download



mitsubishi-V17.1-V22.0-0-051123.exe (Mitsubishi-V17.1-V22.0)

from the column **Download**.

- 2). Connect **Star** main unit with PC correctly by **USB cable** and **DC adaptor**
- 3). Turn on the power by pressing the button **[ON/OFF]**.



Fig.2

- 4). Access to the **USB update mode** from the menu **Settings**→**USB Update**.

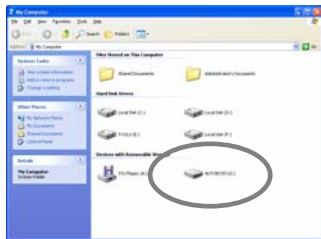


Fig.3

- 5). The removable disc **AUTOBOSS** will be displayed as Fig.3 shown.



Fig. 4

- 6). Double click the icon



nitsubishi-V17.1-V22.0-051123.exe. And Fig. 4 will pop up.

- 7). Press the button **Update CF Card**.



Fig. 5

- 8). The information **Upgrade Succeed!** will be displayed on the top of the screen shown as Fig. 5:

- 9). Press the button **Exit [X]** first and then safely remove USB Mass Storage Drive – Drive.
 10). Turn off the power by pressing the button **[ON/OFF]**.
 11). After three seconds, turn on the power to refresh the system for a new version.

NOTE: For detailed version and relevant information of the update software, please browse www.autoboss.net or call 0086-755-83285146, 83285370 or fax 0086-755-83285370

AUTOBOSS may revise the information without any other notice.